



AEHP Hotplates

MODELS

 AEHP-2-12 AEHP-4-24

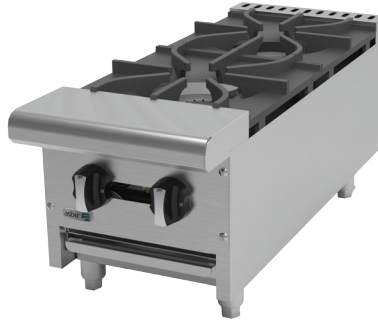
 AEHP-6-36

AEHP HOTPLATES

Quality ★ Performance ★ Service

Available with 2, 4 or 6 burners to fit every operation, the Asber AEHP Hotplates are built for durability and engineered with safety in mind. Ensure fast cooking for any busy kitchen. Full-size power combines with table-top flexibility, excellent space-saving solution.

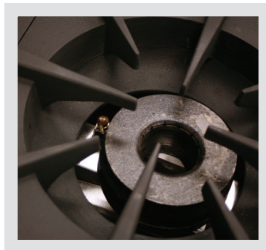
In addition to its all-stainless steel interior and exterior construction, the AEHP series has a powerful capacity of 30,000 BTU per open top burner. With modular customization in mind the hotplates feature a sleek modern design, form and function fit for the most demanding kitchens at an affordable price.



AEHP-2-12



AEHP-6-36



STANDARD FEATURES

- All non-ferrous stainless steel construction: interior, exterior, front, sides, landing ledge and valve controls.
- Heavy gauge welded front frame.
- Adjustable 2" leg.
- Heavy duty 12"x 12" cast iron top grates, removable for easy cleaning, industry standard size.
- Heat is radiated upward.
- Compact design for counter top use.
- One stainless steel non-clog standing pilot for each burner for instant ignition.
- Pilot shield protects pilot from spills and grease.
- Lift-off top piece cast iron burners rated at 30,000 BTU/Hr. each one.
- Sanitary, fully ergonomic edges.
- Full width removable stainless steel bottom tray for easy cleaning.

OPTIONS & ACCESSORIES

- Specify gas and elevation if over 2,000ft. (610m).
- 4" adjustable leg.

WARRANTY

Continental USA & Canada:

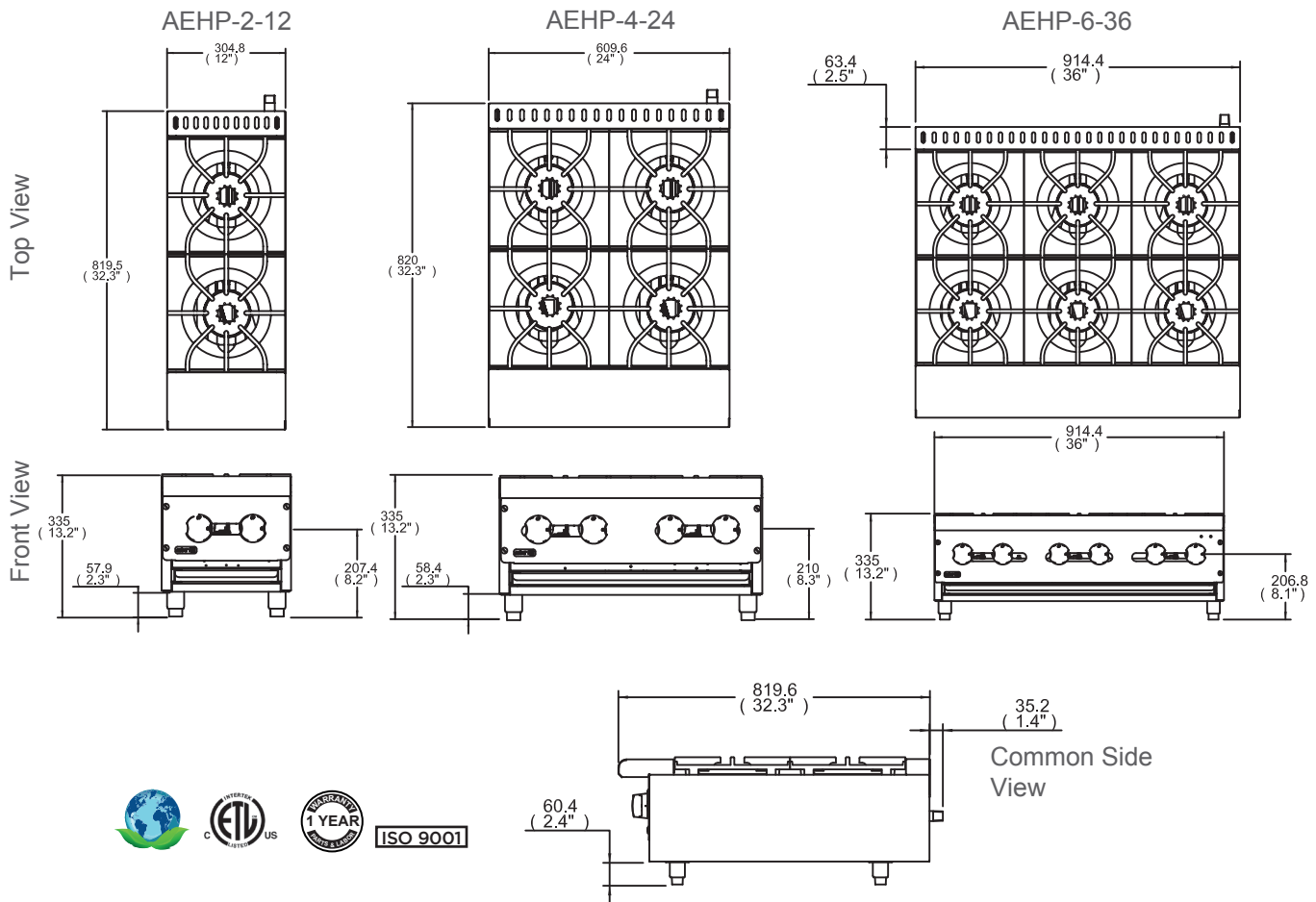
- One year: Labor and parts warranty.
- International: One year parts only.

INSTALLATION REQUIREMENTS

- GAS PRESSURE:** 5.0" W.C. for natural gas or 10.0" W.C. for propane gas. A pressure regulator sized for this unit is included, to be installed at time of connection.
- GAS CONNECTION:** Gas line must be 3/4" or larger, same if flexible connectors are used.
- VENTILATION:** An adequate ventilation system is required for commercial cooking equipment. Request more info @ National-Fire Protection Association, www.NFPA.org
- CLEARANCE:** 6" rear & sides for combustible.
0" rear & sides for non-combustible.

NOTE:

Due to continued development to ensure best possible performance, these specifications are subject to change without prior notice.



TECHNICAL SPECIFICATIONS

MODEL	N BURNERS	BTU/ BURNER	TOTAL BTU	DIMENSIONS			SHIPPING	
				WIDTH	DEPTH	HEIGHT	LBS	CU. FT.
AEHP-2-12	2	30,000	60,000	12"	32 1/3"	13 1/4"	107	6
AEHP-4-24	4	30,000	120,000	24"	32 1/3"	13 1/4"	164	11
AEHP-6-36	6	30,000	180,000	36"	32 1/3"	13 1/4"	209	15