



Item # _____
Model # _____
Quantity _____
Project # _____

Specifications & Features

Model # HPC 7102

Roll-in Heater Insulation Cabinet

Designed to accept roll-in racks and to hold warm baked or cooked food. One heavy gauge stainless steel ramp standard (per door). Built-in digital temperature controller. Easy to set up enables to choose a variety of temperatures so that the cabinet can also be used as a warming cabinet for a variety of foods designed with enduring quality that protects your long term investment.



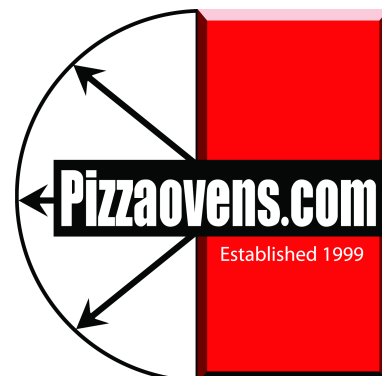
FEATURES:

- Provides cabinet holding temperature of 70 F to 200 F
- Three digital display and control
- The perfect temperature protection function
- Solid door roll-in heated cabinets (inboard castors) with a maximum dimension of 21"W x 27"D x 64"H (535 mm x 680 mm x 1630 mm). -Total pan capacity is 18 pieces (18" x26")
- Construction: Aluminum & steel cabinet
- One year limited manufacturers warranty

Note: Dimensions and Specification are subject to change without notice.

Approvals

ETL

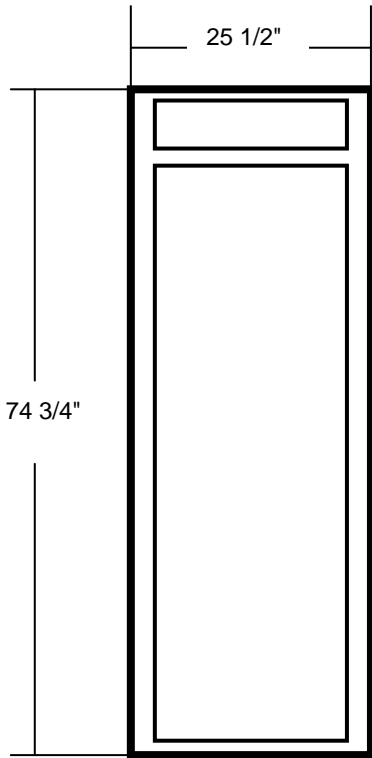




Dimensions and Specifications

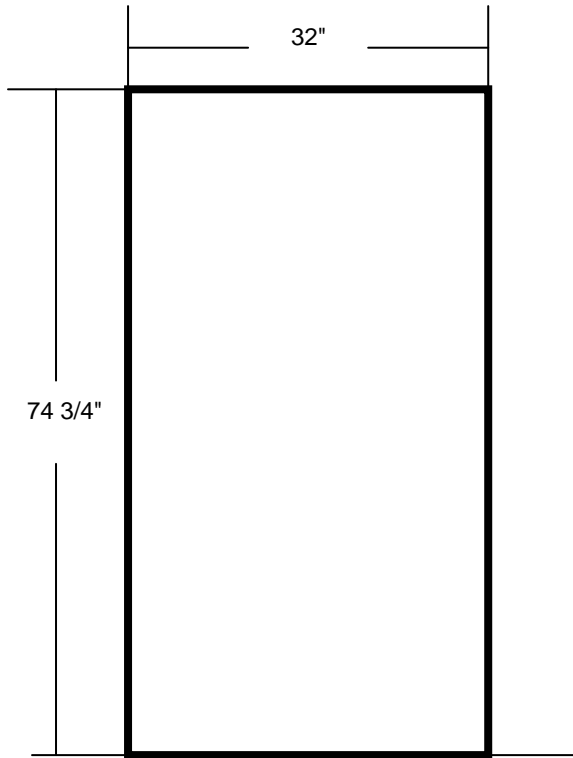
Model # HPC 7102
Heater/Proofer Insulation Cabinet

Item #	_____
Model #	_____
Quantity	_____
Project #	_____

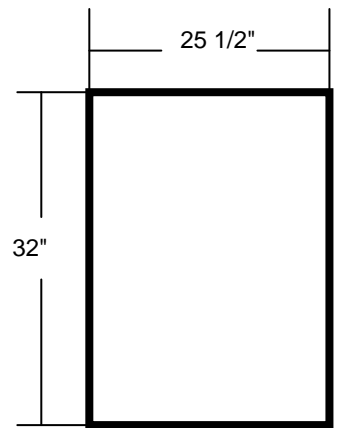


Front View

Model:HPC7102



Side View



Top View

Approvals:	ETL
Electrical:	120 Volt, 60 HZ (1800 Watts) (or) 220 Volt, 50 HZ
Options:	stainless steel ramp
Dimensions:	25 1/2" W x 32" D x 74 3/4" H
Net Weight:	242 pounds
Gross (Shipping) Weight:	260 pounds
Package:	28" W x 33 3/4" D x 82 1/2" H

Note: Dimensions and specifications are subject to change without notice.

