

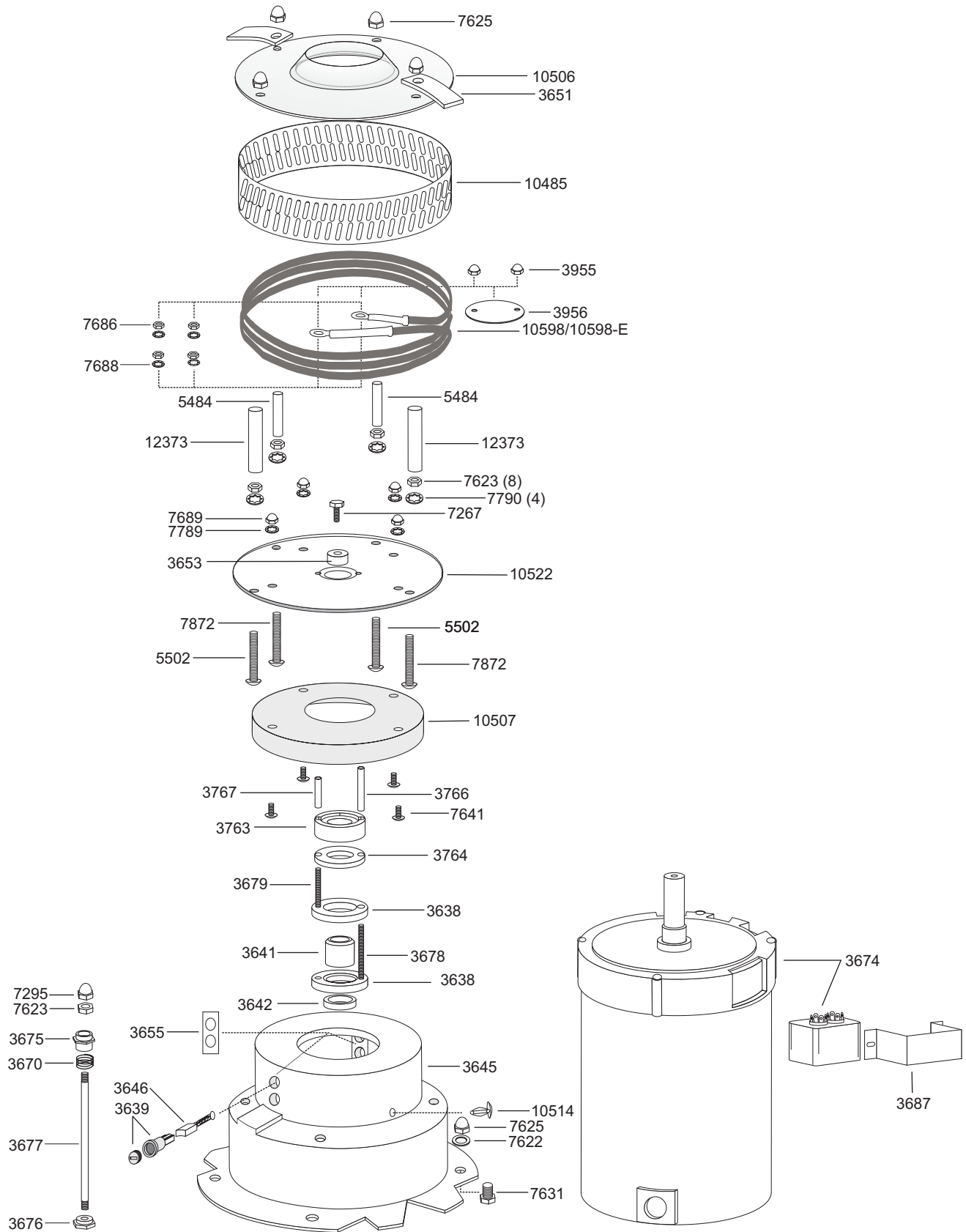
RINGMASTER™ 7" COTTON CANDY MACHINE

Beginning Serial No. 99020966

DOC RM720001

RM7-A/E-2.0-A

01/99



C. CRETORS AND COMPANY
3243 N. CALIFORNIA AVENUE
CHICAGO, IL 60618
PHONE: (773)588-1690, (800)228-1885, FAX: (773)588-2171
WEB SITE: <http://www.cretors.com> Email: postmaster@cretors.com

RINGMASTER™ 7" COTTON CANDY MACHINE

DOC RM720001

RM7-A/E-2.0-A

Beginning Serial No. 99020966

01/99

3638	SLIP RING	10506	SPINNER HEAD TOP
3639	BRUSH HOLDER (CAP & CLIP)	10507	SPINNING SUGAR GUARD
3641	CENTER RING INSULATOR	10514	PLUG
3642	BOTTOM RING INSULATOR	10522	SPINNER HEAD BOTTOM
3645	MOTOR MOUNT	10598	ELEMENT-120V
3646	BRUSH & SPRING	10598-E	ELEMENT-230V
3651	LEATHER FLOATER	12373	SPACER RINGMASTER 7"
3653	RETAINING WASHER		
3655	BRUSH HOLDER ALIGNMENT PLATE		
3659	RETAINING RING		
3670	MOTOR MOUNT SPRING		
3674	MOTOR & CAPACITOR		
3675	TOP SPRING BUSHING		
3676	BOTTOM SPRING BUSHING		
3677	SPRING SUPPORT ROD		
3678	BRASS RING STUD-LONG		
3679	BRASS RING STUD SHORT		
3687	CONDENSER CLAMP		
3697	FLOSS RING-DOUBLE		
3763	SUPPORT RING		
3764	INSULATOR WASHER		
3766	INSULATOR TUBE-LONG		
3767	INSULATOR TUBE-SHORT		
3955	INSULATOR NUTS		
3956	TOP CONTACT INSULATOR		
5484	SS SPACER PLATE		
5484	SS SPACER (1-3/8")		
5502	10-32 x 2 RD HD SCREW		
7267	1/4-28 x 7/8 HEX BOLT W/ NYLOK		
7295	10-32 BLIND NUT		
7622	3/8" FLAT WASHER		
7623	10-32 HEX NUT (8)		
7625	10-32 CAP NUT		
7631	3/8-16 x 5/8 HEX BOLT		
7641	8-32 x 1/4 SS TRUSS HEAD		
7686	8-32 BRASS NUT		
7688	8-32 BRASS WASHER		
7689	8-32 CAP NUT		
7789	#8 STAR LOCKWASHER		
7871	10-32 x 2-5/16 ROUND HEAD		
7872	10-32 x 2-3/16 ROUND HEAD		
7790	#10 STAR LOCKWASHER (4)		
10485	SS FLOSS RING		

C. CRETORS AND COMPANY
3243 N. CALIFORNIA AVENUE
CHICAGO, IL 60618

PHONE: (773)588-1690, (800)228-1885, FAX: (773)588-2171

WEB SITE: <http://www.cretors.com> Email: postmaster@cretors.com