



Junior Whisk

Ref. FT005



TECHNICAL DATA

OUTPUT MAX	270 W
SPEED	2,000 R.P.M.
VOLTAGE	115 V or 230 V
TOTAL LENGTH	500 mm / 19.7"
WHISK LENGTH	185 mm / 7.3"
DIAMETER	94 mm / 3.7"
ACTUAL WEIGHT - SHIPPING WEIGHT	1,4 kg / 3 lbs - 1,7 kg / 3.7 lbs
WHISK	NON DETACHABLE

MAINTENANCE

Put the whisk in clear water and start the machine for 3 seconds or more to clean the whips.

Clean the whisk by passing it under the faucet.

Wash the motor block with a sponge or with a slightly damp cloth.

Never clean this machine with a water jet spray.



0.25 / 1.25 gal.

ADVANTAGES

- Lightweight, quick and efficient
- Non detachable whisk: ensures durability of the product
- Stainless steel ejectable whisks for easy cleaning and perfect hygiene.
- Variable speed as standard
- Very handy
- Security button
- Double insulation



USE

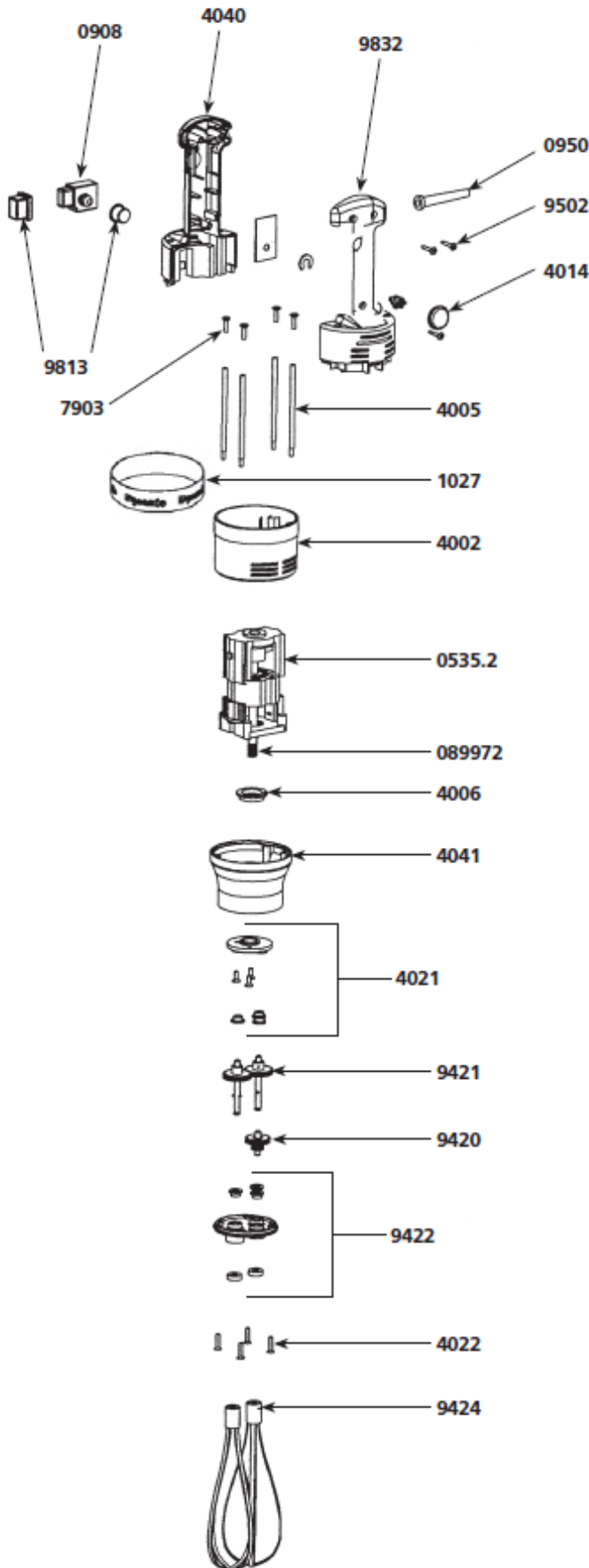
With the Junior whisk, you can prepare with ease, creams, mousses, whipped egg whites, sauces, batters, mayonnaise...

Capacity: 1 to 5 litres / 0.25 to 1.25 gal.

JUNIOR SERIES



JUNIOR WHISK MIXER



Parts list

Code

Motor 230 V + Gear	0535.2
Motor 115 V + Gear	0535.3
Pin 3x14	0745
Non-locking switch	0908
Strain relief 230 V	0950
Strain relief 115 V	0950.1
Dynamic label	1027
Speed variator 230 V	1213
Speed variator 115 V	1214
Upper motor housing	4002
Braces (4)	4005
Ball bearing ring	4006
Filtering capacitor	4012
Speed variator knob	4014
Plate w/ seals and screws	4021
Holder assembly screws	4022
Lower half handle w/ Junior Whisk label 230 V	4040
Lower half handle w/ Junior Whisk label 115 V	4040.1
Lower aluminium motor housing	4041
Complete handle Junior Whisk 230 V	4042
Complete handle Junior Whisk 115 V	4042.1
Carbon brushes (2) 230 V	4050
Carbon brushes (2) 115 V	4050.1
Brace screws (4)	7903
Power cord 230 V	9011
Power cord 115 V	9040
Power cord Australian	9066
Power cord UK	9067
Middle gear & axle	9420
Equipped output axle w/ 2 gears+pins	9421
Holder assembly w/ seals & washer	9422
Whisk tool (2)	9424
Handle screws (3)	9502
Switch protector	9813
Upper half handle	9832
Label w/ serial number 230 V	1099.10
Label w/ serial number 115 V	1099.11
Wall bracket	089959
Gear + Pin	089972

