



**PMF 250 COMBI**

Ref. MF003



WWW.DYNAMICMIXERS.COM



Mixer

Whisks



5 / 10 gal.

1 / 5 gal.



SENIOR SERIES

## TECHNICAL DATA

<b>OUTPUT MAX</b>	350 W
<b>SPEED</b>	0 to 9,500 R.P.M.
<b>VOLTAGE</b>	115 V or 230 V
<b>DIAMETER</b>	97 mm / 3.8"
<b>TOTAL LENGTH</b>	640 mm / 25.2"
<b>MOTOR BLOCK</b>	340 mm - 2 kg / 9.5" - 4.4 lbs
<b>MIXER TOOL</b>	300 mm - 0.6 kg / 11.8" - 1.3 lbs
<b>WHISK TOOL</b>	205 mm - 0.8 kg / 8.1" - 1.8 lbs
<b>SHAFTS</b>	DETACHABLE

## MAINTENANCE

Clean the mixer and whisk tools by passing them under the faucet.

**Mixer tool:** put the tube with the blade protector in clear water and start the machine for 3 seconds or more to clean the inside of the blade protector.

**Whisks tool:** dismantle whisks from their attachments by pushing strongly on the cups, then you can securely rinse the whisks under running water.

Wash the motor block with a sponge or with a slightly damp cloth.

**Never clean this machine with a water jet**

## ADVANTAGES

- Ideal for medium size applications
- Sturdy
- Very handy
- Detachable tools for easy cleaning and maintenance
- Ejectable whisks for easy cleaning
- Safety button
- Variable speed as standard
- Double insulation
- Stainless steel mixer tube, guard and whisks for easy cleaning and perfect hygiene
- Titanium-plated blade easily dismantled without any special tool



## USE

**Mixer:** Indispensable for the preparation of soups, salad dressings, gravies, sauces, mayonnaise, refried beans and many other applications.

**Capacity:** 20 to 40 L / 5 to 10 gal.

**Whisks:** For easy preparation of batters, creams, mousseline sauces and whipped egg whites.

**Capacity:** 5 to 20 L / 1 to 5 gal.

518 rue Léo Baekeland - BP57 - 85290 Mortagne / Sèvre

Tel : +33 (0)2 51 63 02 72 - Fax : +33 (0)2 51 63 02 73

E-mail : [contact@dynamicmixers.com](mailto:contact@dynamicmixers.com)

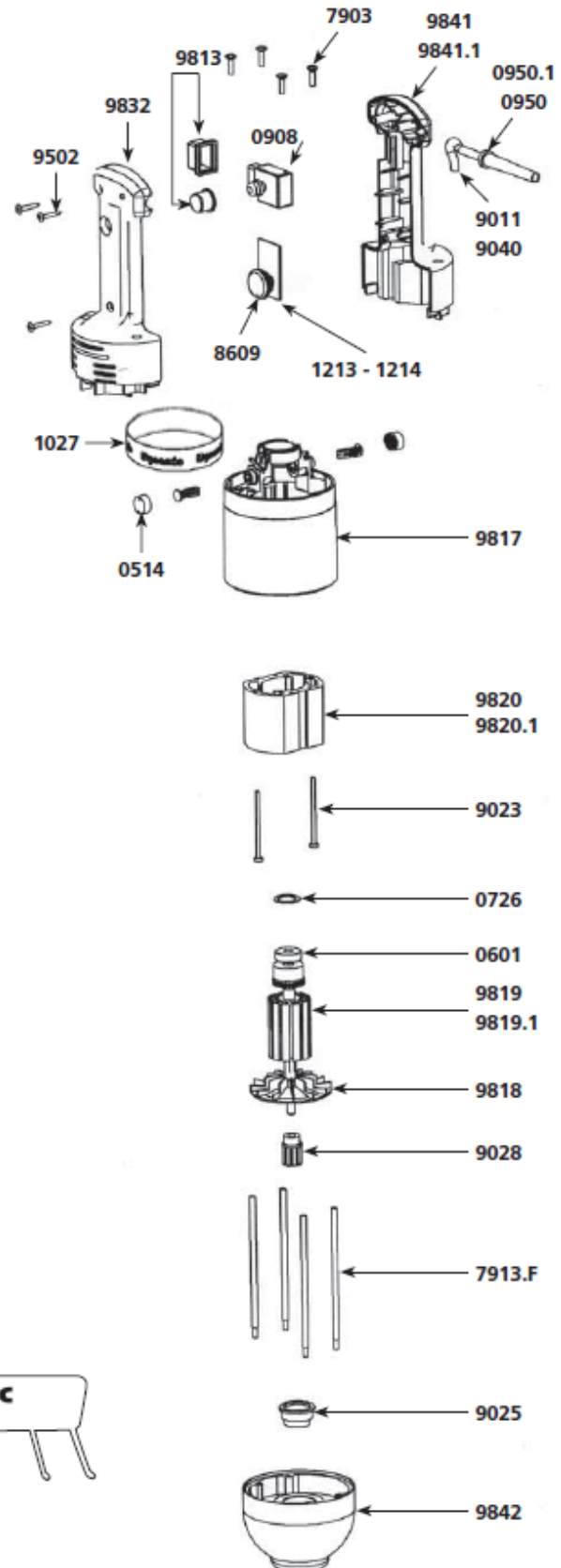


**Dynamic**

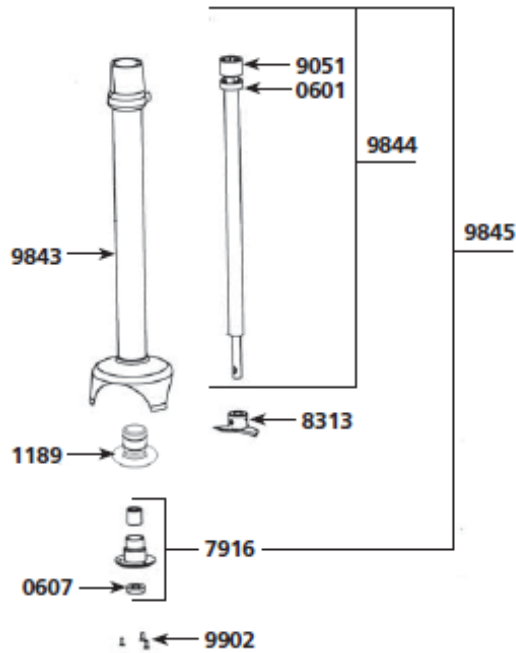
# TECHNICAL SHEET

## PMDH / PMF 250 MOTOR BLOCK

Parts list	Code
Carbon brushes (2)	0514
Ball bearing	0601
Squeezing washer	0726
Wall bracket	0880
Non-locking switch	0908
Capacitor	0909
Strain relief 230 V	0950
Strain relief 115V	0950.1
Warning label	1017
Dynamic label	1027
Label w/ serial number 230 V	1071
Label w/ serial number 115 V	1072
Variable speed control board 230 V	1213
Variable speed control board 115 V	1214
Brace screws (4)	7903
Braces (4)	7913.F
Variable speed control knob	8609
Power cord 230 V	9011
Stator screws (2)	9023
Self-lubricating ring	9025
Coupler for armature	9028
Power cord 115 V	9040
Power cord (UK)	9067
Handle screws (3)	9502
Switch protector	9813
Upper motor casing	9817
Fan	9818
Rotor w/ o coupling 230 V	9819
Rotor w/o coupling 115 V	9819.1
Stator 230 V w/ carter, carbon brushes holders	9820
Stator 115 V w/ carter, carbon brushes holders	9820.1
Upper half handle	9832
Complete handle 230 V	9840
Complete handle 115 V	9840.1
Lower half handle w/ label 230 V	9841
Lower half handle w/ label 115 V	9841.1
Aluminium carter + ball bearing	9842
BM 250 Motor block (see machine catalogue)	AC005



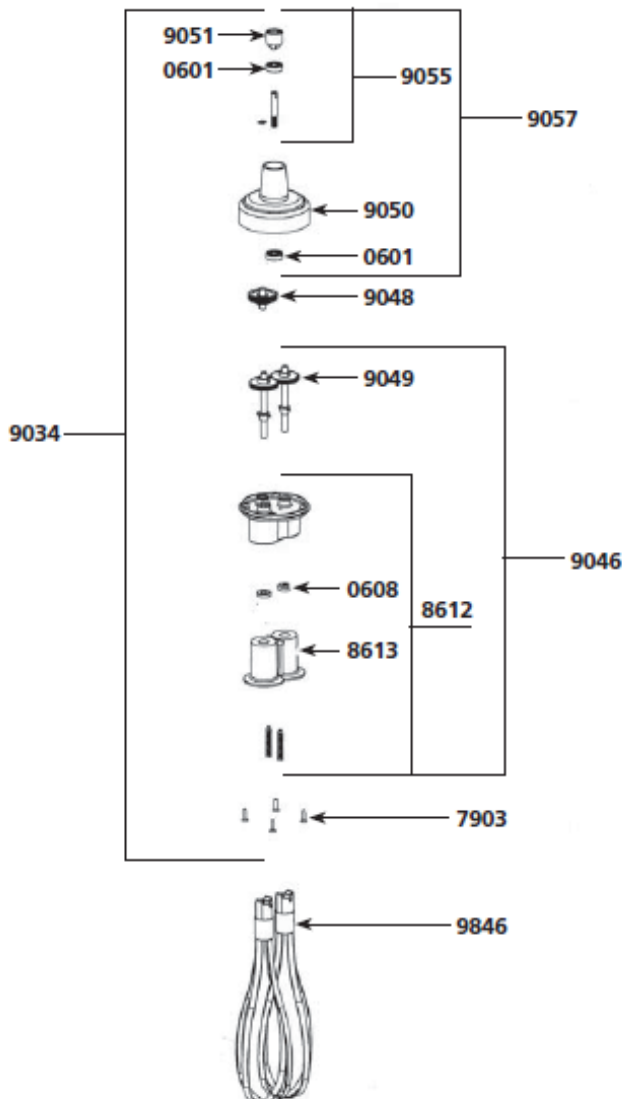
PMF - PMDH 250 mixer tool



Parts list

Code

Ball bearing	0601
Waterproof seal	0607
Bearing holder + seal	1189
Lower ball bearing assembly (w/ o screws)	7916
Cutter blade (w/ screw)	8313
Coupling casing + pins	9051
Tube assembly + bearing	9843
Shaft & coupling sleeve	9844
Shaft, lower bearing & cutter assembly	9845
Lower bearing screws (3)	9902
M 250 Complete Mixer tool (see machine catalogue)	AC006



PMF 250 whisk tool

Parts list

Code

Ball bearing	0601
Waterproof seal for whisk	0608
Pin 3 X 20	0744
Pin 3 X 14	0745
Brace screws (4)	7903
Holder + plastic ejector + seal	8612
Plastic ejectors (pair)	8613
Reduction gear assembly	9034
Lower casing w/ o middle gear	9046
Central double gear & shaft	9048
Single gear (2) + pin	9049
Upper plastic casing	9050
Coupling casing + pin	9051
Equipped upper shaft	9055
Complete upper casing	9057
Whisks (2)	9846
F 250 Complete whisk tool (see machine catalogue)	AC007