

MX 410

Ref : MX004

MASTER SERIES



Description

- Powerful, sturdy
- Non detachable shaft: ensures durability of the mixer
- Micro switch automatic locking system
- Continuous function auto run button allows to mix continuously or pulse.
- Ergonomic design
- Higher ventilation point
- Variable speed as standard
- Indicator light : for your safety the light indicates that the unit is plugged in and ready for operation
- Stainless steel mixer tube, guard and whisks for easy cleaning and perfect hygiene
- Titanium-plated blade easily dismantled without any special tool



*Variable speed
optional*

OUTPUT MAX	600 W
SPEED	10 500 tr/mn
VOLTAGE	110-120V - 220-240V 50-60Hz
TOTAL LENGTH	720 mm / 28.3"
SHAFT LENGTH	410 mm / 16.1"
DIAMETER	122 mm / 4.8"
ACTUAL WEIGHT	3,5 kg / 7.7 lbs

Use

It allows to mix, directly in the pots, many applications including : fish soups, panades (thick soup reduced to puree), salad dressings, pancakes paste, gravies, sauces, mayonnaise, puree of vegetables lightly pulverized, porridge, raw carrots puree, fruits cream ...

Capacity : 40 to 100 Liters

Maintenance

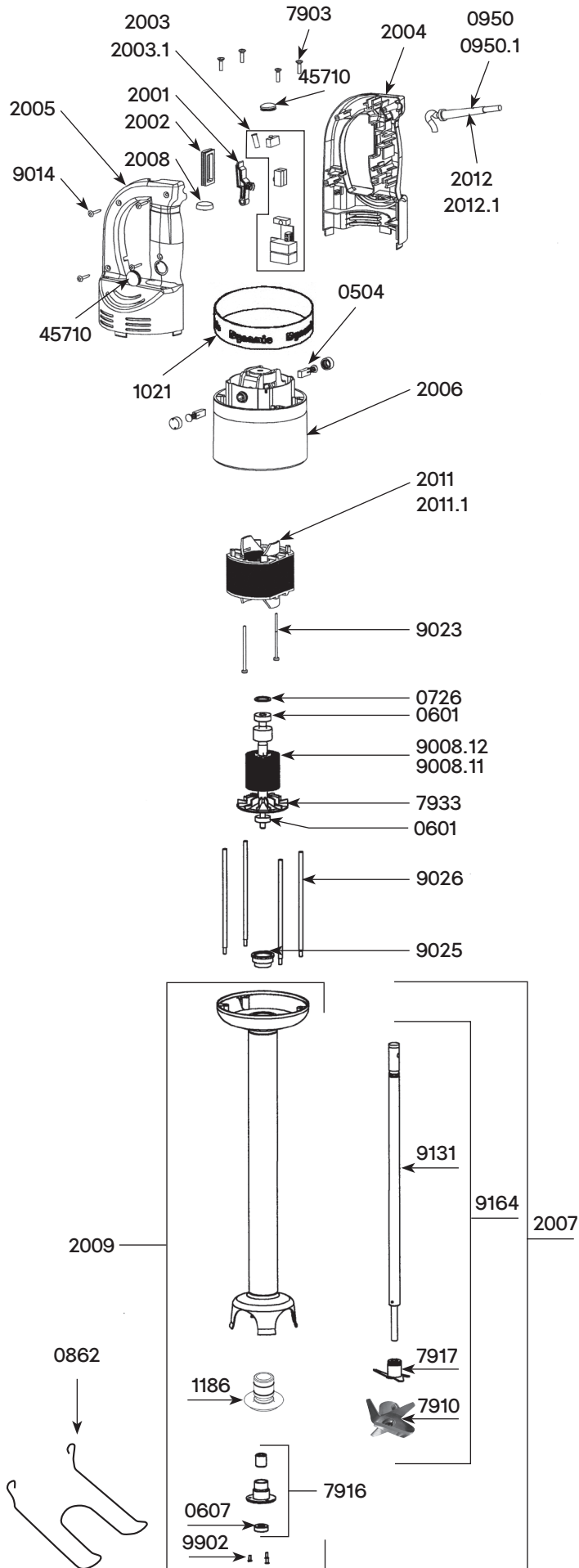
Put the tube with the blade protector in clear water and start the machine for 3 seconds or more to clean the inside of the blade protector.

Clean the outside of the tube and the blade protector by passing it under the faucet.

Never clean this machine with a water jet spray.

Wash the motor block with a sponge or with a slightly damp cloth.

TECHNICAL SHEET



Parts list

Code

Motor brushes (2)	0504
Ball bearing	0601
Waterproof seal	0607
Squeezing washer	0726
Safety button return spring	0768
Wall bracket	0862
Strain relief 230 V	0950
Strain relief 115 V	0950.1
Filter	0999.20
Warning label	1017
Dynamic label	1021
Label w/ serial number 230 V	1067
Label w/ serial number 115 V	1068
bearing holder + seal	1186
Micro switch	1237
Power on indicator light 230 V	1241
Power on indicator light 115 V	1241.1
Control lever	2001
Safety control lever	2002
Circuit board 230 V (4 switches + capacitor)	2003
Circuit board 115 V (4 switches + capacitor)	2003.1
Upper half handle	2004
Lower half handle	2005
Motor housing brush holder	2006
Complete foot assembly	2007
Speed control plug	2008
Foot assembly w/ bearing assembly	2009
Complete handle w/ power cord 230 V	2010
Complete handle w/ power cord 115 V	2010.1
Stator 230 V	2011
Stator 115 V	2011.1
Power cord 230 V > 2002	2012
Power cord 115 V > 2002	2012.1
Power cord (UK) > 2002	2012.2
Power cord (Australia) > 2002	2012.3
Brace screws (4)	7903
Emulsifying blade	7910
Lower bearing assembly	7916
Cutter blade w/ screw	7917
Fan	7933
Rotor 115 V	9008.11
Rotor 230 V	9008.12
Power cord 230 V < 2002	9011
Handle screws (4)	9014
Field brace screws (2)	9023
Ball bearing ring	9025
Braces (4)	9026
Power cord 115 V < 2002	9040
Carbon brush wires 230 V	9043
Power cord (Australia) < 2002	9066
Power cord (UK) < 2002	9067
Fitted shaft	9131
Carbon brush wires 115 V	9143
Shaft, lower bearing & cutter assembly	9164
Lower bearing screws - Stainless steel (3)	9902
Safety button	45710