



WWW.DYNAMICMIXERS.COM



0.25 / 2.5 gal.

MINI SERIES



MD 95



Ref. MX008 (Emulsifying blade)
MX010 (Standard blade)

TECHNICAL DATA

| | |
|--|--|
| OUTPUT MAX | 250 W |
| SPEED | 11,500 R.P.M. |
| VOLTAGE | 115 ou 230 V |
| TOTAL LENGTH | 445 mm / 17.5" |
| MIXER TOOL LENGTH | 160 mm / 6.3" |
| DIAMETER | 72 mm / 2.8" |
| ACTUAL WEIGHT - SHIPPING WEIGHT | 1.2 kg / 2.6 lbs - 1.5 kg / 3.3 lbs |
| SHAFT | NON DETACHABLE |

MAINTENANCE

Put the tube with the blade protector in clear water and start the machine for 3 seconds or more to clean the inside of the blade protector.

Clean the outside of the tube and the blade protector by passing it under the faucet.

Wash the motor block with a sponge or with a slightly damp cloth.

Never clean this machine with a water jet spray.

ADVANTAGES

- Lightweight, quick, efficient and sturdy
- Non detachable mixer tool: ensures durability of the mixer
- Safety button
- Variable speed optional
- Double insulation
- Stainless steel mixer tube and guard
- 2 blades available: standard or emulsifying
- Titanium-plated blades easy to remove
- Recommended by "L'Ecole du Grand Chocolat Valrhona"



USE

It allows to mix, directly in the pots, small capacities of soups, panades (thick soup reduced to puree), salad dressings, pancakes paste, gravies, sauces, mayonnaise, puree of vegetables lightly pulverized, porridge, raw carrots puree, fruits cream ...

With its emulsifying blade, the MD 95 is ideal for dairy and pastry products.

Capacity: 4 to 12 L / 0.25 to 2.5 gal.

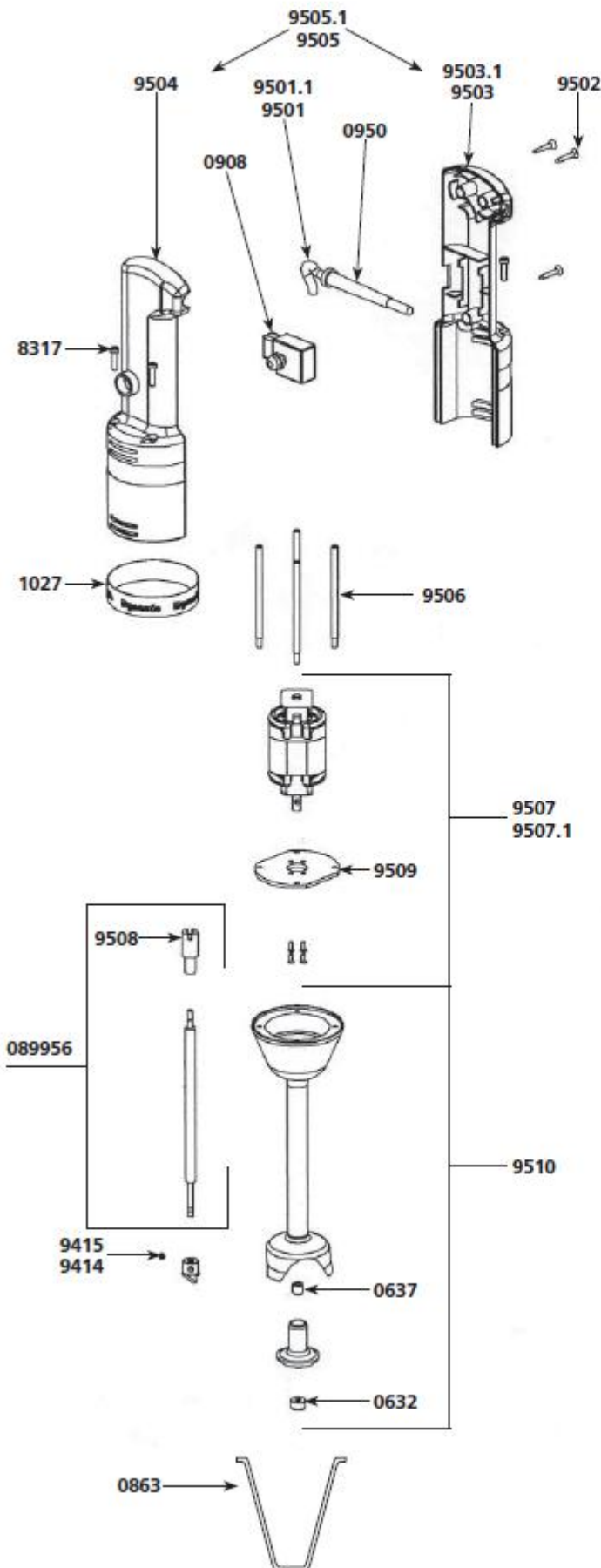
518 rue Léo Backeland - BP57 - 85290 Mortagne / Sèvre
Tèl : +33 (0)2 51 63 02 72 - Fax : +33 (0)2 51 63 02 73
E-mail : contact@dynamicmixers.com



Dynamic

TECHNICAL SHEET

MD 95 MIXER



Parts list

Code

| | |
|---|--------|
| Waterproof seal | 0632 |
| Self-lubricating ring | 0637 |
| Hook | 0863 |
| Complete stainless steel shaft + coupling | 089956 |
| Non-locking switch | 0908 |
| Filtering Capacitor | 0909 |
| Strain relief 230 V | 0950 |
| Strain relief 115 V | 0950.1 |
| Dynamic label | 1027 |
| Brace screws (4) | 8317 |
| Power cord (UK) | 9067 |
| Emulsifying blade | 9414 |
| Cutter blade w/screws | 9415 |
| Power cord 230 V | 9501 |
| Power cord 115 V | 9501.1 |
| Handle screws (3) | 9502 |
| Lower handle w/ label 230 V | 9503 |
| Lower handle w/ label 115 V | 9503.1 |
| Upper half handle | 9504 |
| Complete handle 230 V (w/ sticker, screws, logo, switch, strain relief, power cord) | 9505 |
| Complete handle 115 V (w/ sticker, screws, logo, switch, strain relief, power cord) | 9505.1 |
| Braces (4) | 9506 |
| Motor & screw & capacitor 230 V | 9507 |
| Motor & screw & capacitor 115 V | 9507.1 |
| Coupling sleeve | 9508 |
| Motor holder w/ 4 screws | 9509 |
| Foot assembly w/ bearing (exc. shaft + blade) | 9510 |
| Carbon brushes (2) 230 V | 9512 |
| Carbon brushes (2) 115 V | 9512.1 |