

DYNAMIX NOMAD® 160

Ref : MX130

DYNAMIX SERIES



Description

- **Cordless mixer**
- **Lithium-ion battery with long autonomy**
- Lightness, quick, efficient and robust
- Easily detachable, easy cleaning and maintenance
- Stainless steel foot, bell and titanium-plated blade **for a perfect hygiene**
- **Titanium-plated blade easy to remove**
- **Ergonomic handle**
- **Silent**
- **Versability** with all the additional accessories (standard or emulsifying knives, whisks or emulsifying discs, removable whisks, ricer tool, cutter bowl, 1- to-3 liters bowl)



Accessories

Discs / blades



OUTPUT MAX	2000 mAh - 12 Vdc
SPEED	10 000 R.P.M.
VOLTAGE	12 Vdc
TOTAL LENGTH	450 mm / 17.7"
SHAFT LENGTH	160 mm / 6.3"
DIAMETER	110 mm / 4.3"
ACTUAL WEIGHT	1,1 kg / 2.4 lbs

Use

Mixer : it allows to crush and mix, in small quantities, directly in pots excellent soups and realize sauces and gravy, mayonnaises, brunoises, crêpes batter, porridge, fruits cream, etc.

Whisks : To prepare easily batter, creams and mousselines.

Ricer : Perfect to realize purees or smooth vegetable creams, compotes, etc.

Cutter : It allows to crush, mix, chop vegetables, garlic, onions, herbs, parsley, nuts, almonds, meats, Parmesan, etc.

Capacity : 1 to 4 L.

Maintenance

Easy cleaning with detachable tool. Wash the tools and accessories in clean water

NEVER clean this machine with a water jet spray and do not put in the dishwasher

Clean the motor block with a slightly wet sponge or cloth.

Use the Dynamix support (ref: SM030) to store your device.

Dynamic
 518 rue Léo Baekeland
 BP57 - 85290 Mortagne sur Sèvre
 Tel : +33 (0)2 51 63 02 72
 Fax : +33 (0)2 51 63 02 73
 E-mail : contact@dynamicmixers.com

www.dynamicmixers.com

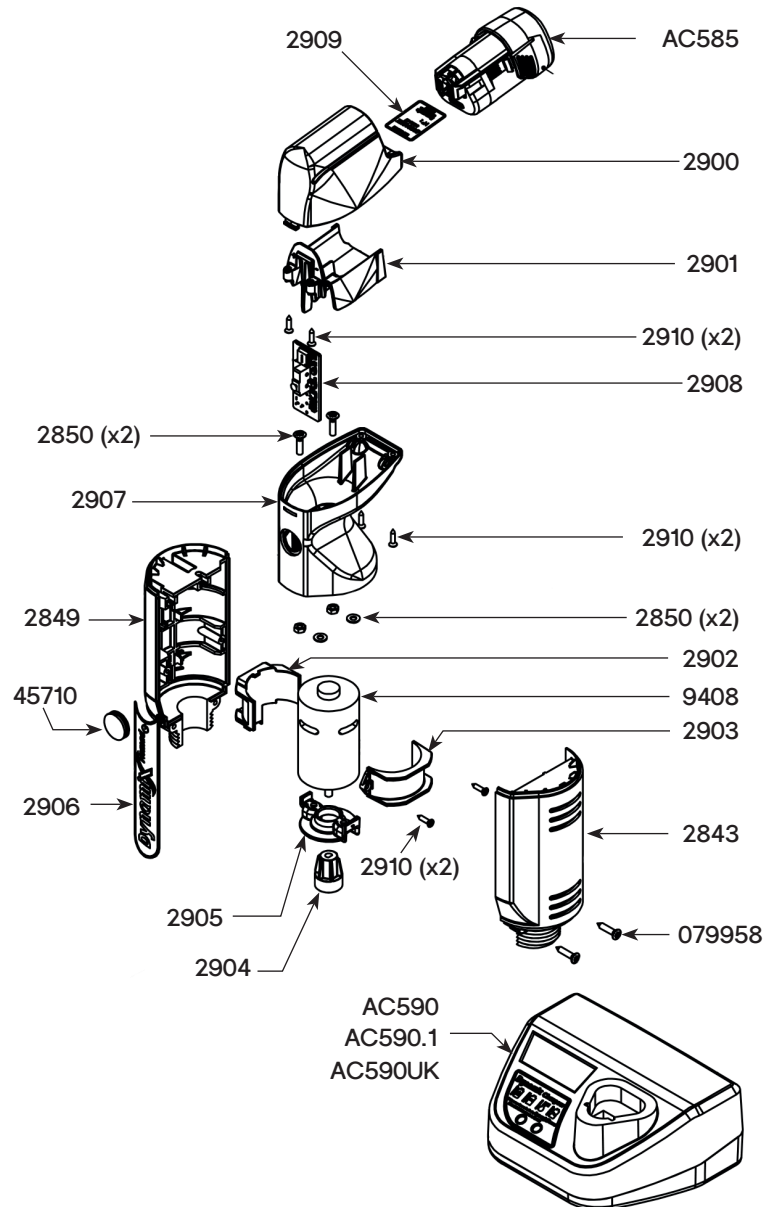
TECHNICAL SHEET



Parts list

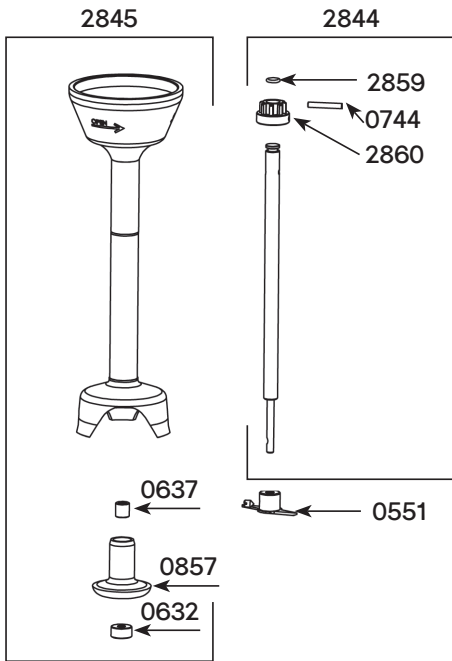
Code

DC 12V battery	AC585
220-240V charger	AC590
110-120V charger	AC590.1
220-240V charger - UK power cord	AC590UK
Right handle	2843
Left handle	2849
Screws + washer + handle nuts (2)	2850
Battery housing	2900
Terminal support	2901
Motor support	2902
Motor belt	2903
Coupling	2904
Centraliser + screws	2905
Label	2906
Hood	2907
Circuit board	2908
ID label	2909
Screw	2910
12V DC Motor	9408
Handle cap protectors	45710
Handle screws (2)	079958

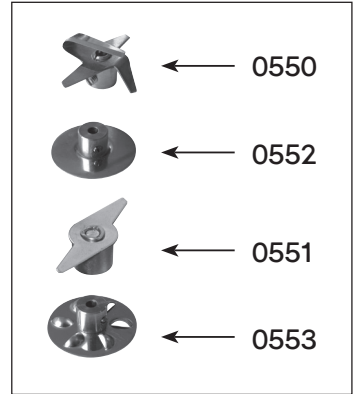
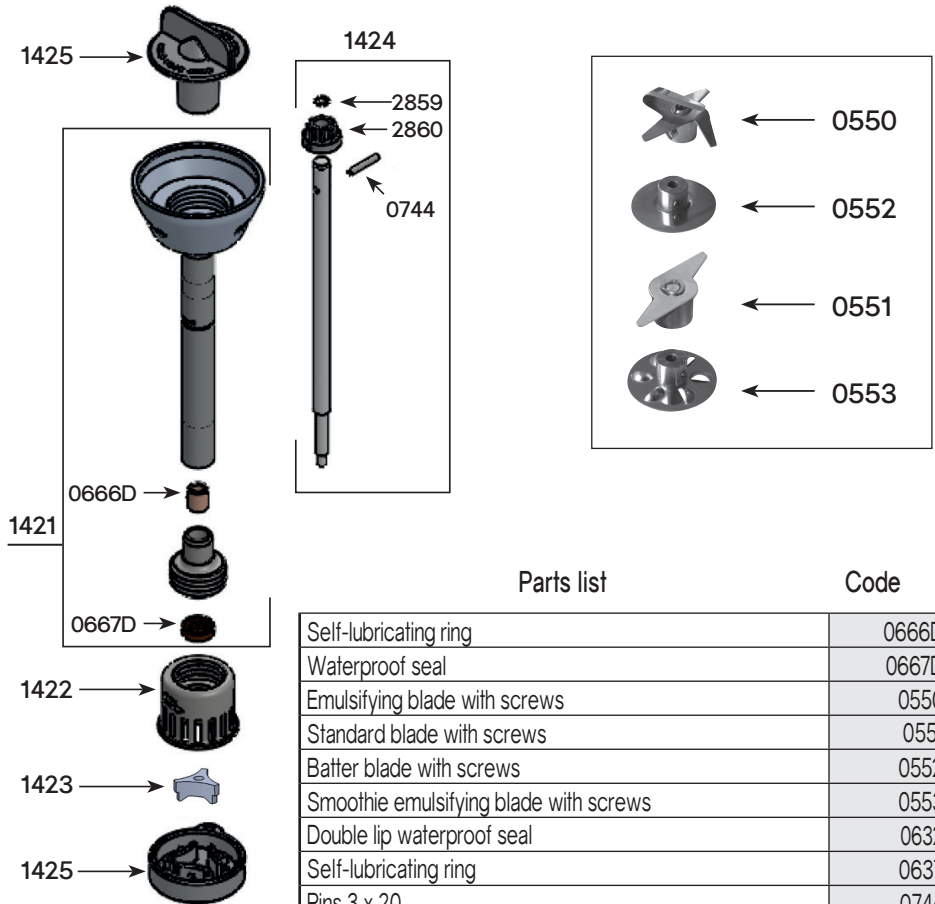


TECHNICAL SHEET

M 160 - Ref AC520



Blender Dynamix® - Ref AC560



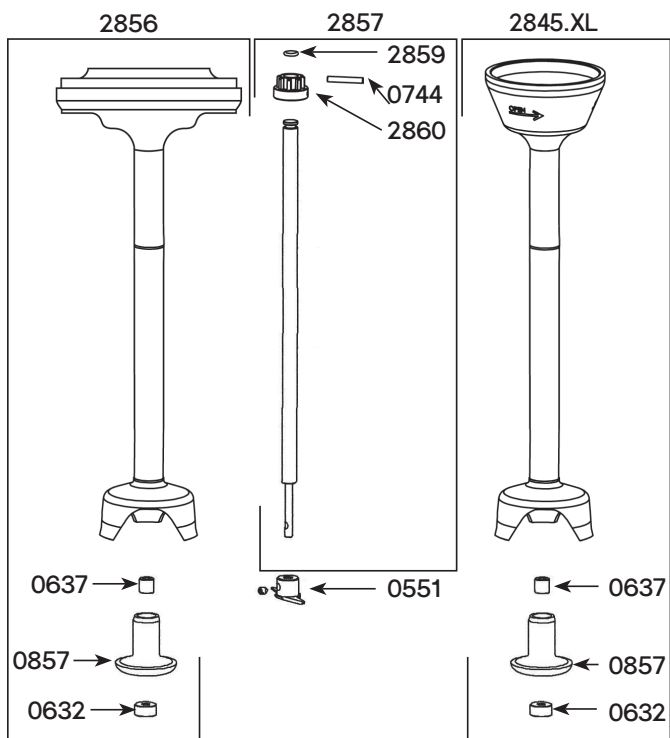
Parts list

Code

Parts list	Code
Self-lubricating ring	0666D
Waterproof seal	0667D
Emulsifying blade with screws	0550
Standard blade with screws	0551
Batter blade with screws	0552
Smoothie emulsifying blade with screws	0553
Double lip waterproof seal	0632
Self-lubricating ring	0637
Pins 3 x 20	0744
Bearing holder	0857
Brace with rings	1421
BLENDER DYNAMIX bell	1422
BLENDER DYNAMIX crushing knife	1423
Shaft (coupling, pin, O ring)	1424
Dismounting tool	1425
Shaft and bearing	2844
Dynamix foot assembly + ring + seal	2845
Extended Dynamix foot assembly + ring + seal	2845.XL
Dynashake foot assembly + ring + seal	2856
Shaft and bearing	2857
Driving shaft joint	2859
Coupling hub	2860

M Shake 190 - Ref AC530

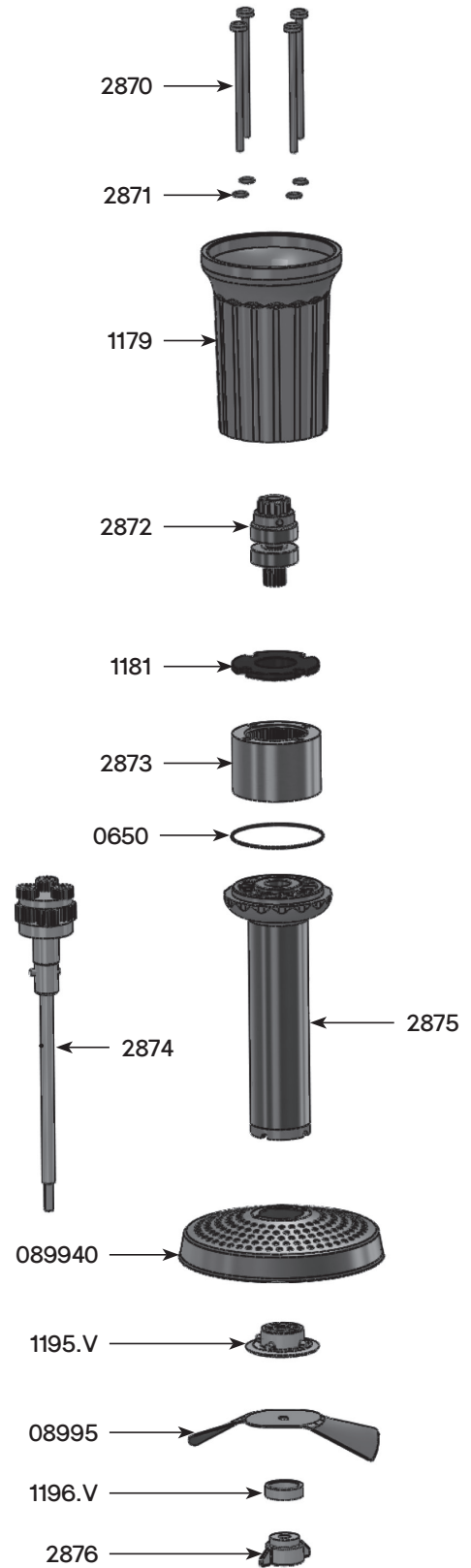
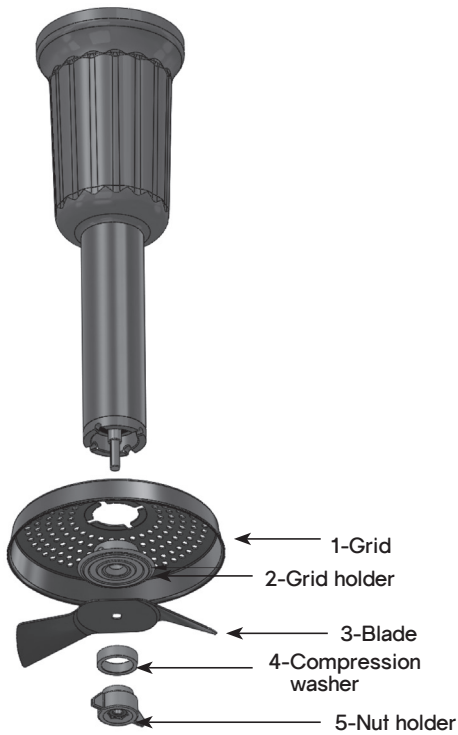
M 190 - Ref AC550



TECHNICAL SHEET

RICER TOOL DYNAMIX - Ref AC517

Parts list	Code
O. ring	0650
Potato blade	08995
Potato grid	089940
Ricer inferior carter	1179
Secured washer	1181
Grid holder	1195.V
Compression washer	1196.V
Handle screws (4)	2870
O. ring (x4)	2871
Equipped upper shaft	2872
Interior geared crown	2873
Equipped output shaft	2874
Equipped spacer for potato ricer	2875
Nut holder + nut	2876



TECHNICAL SHEET



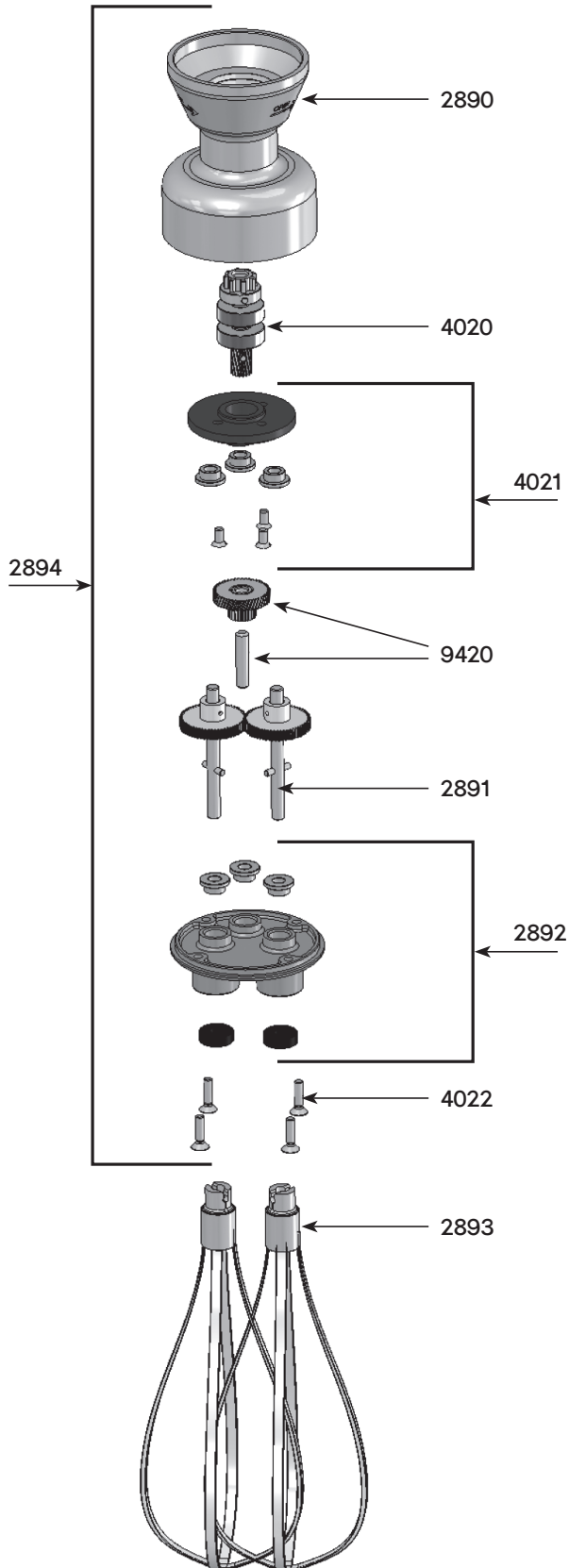
WHISK DYNAMIX - Ref AC516

Parts list

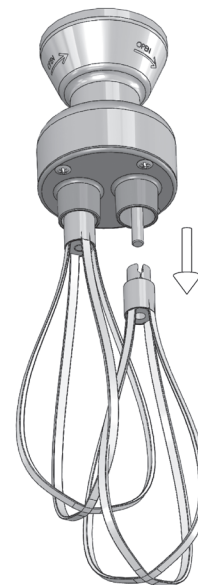
Code

Parts list	Code
Lower motor whisk housing	2890
Equipped output axle w/ 2 gears+pins	2891
Holder assembly w/ 3 self-lubricating rings	2892
Whisk tool (2)	2893
Reduction gear assembly (without whisk)	2894
Equipped upper shaft	4020
Equipped plate with rings	4021
Holder assembly screws	4022
Middle gear & axle	9420

Dynamix whisks



Whisk tool dismantling



TECHNICAL SHEET

CUTTER BOWL DYNAMIX - Ref AC518

Parts list Code

Base	1178.V
Equipped cover	2880
Blade	2881
Bowl	2882

Equipped lid 2880

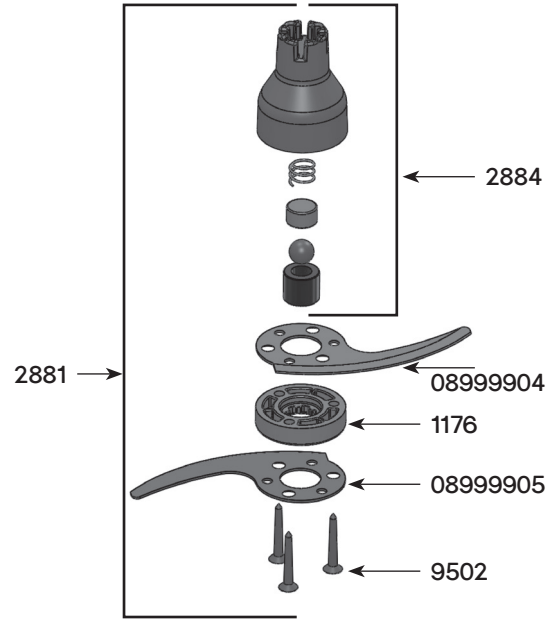
O. ring	0658
O. ring (x4)	2871
Equipped upper shaft	2885
Handle screws (4)	2886
Reduction plate + ring	2887
Lid + reduction gear	2888

Blade 2881

A blade	08999904
B blade	08999905
Blade holder	1176
Equipped cone	2884
Set of screws (x3)	9502



Blade



Equipped lid

