



Ovens

ADVANCE ovens

ADVANCE OVEN, AE-201

19010557

DIMENSIONS

		<u>Article</u>	<u>Packed</u>
Length	mm	929,00	1.000,00
Depth	mm	964,00	1.100,00
Height	mm	1.841,00	2.000,00
Weigth	Kg	333,00	366,00
Volumen	m3	1,65	2,20

ELECTRICITY

<u>Electric power</u>			
230V -I+N			36,60
230V - III		3x16+T - 100 A	
400V - III+N		4x6+T - 60 A	

PLUMBING - WATER

Water consumption (lit/h)			40,00
Pressure (Kg/cm2)			2 - 4

GAS

Not used

STEAM

Not used

AIR

Not used

LEVEL SOUND

(dB) **62,00**

ADVANCE OVEN, AE-201

High quality, fast cooking :

- Professional quality
- Easy to use and efficient
- Perfect results
- Affordable

Capacity for 20 1/1-GN trays.

Push-button and "Scrolling" controls.

5 cooking methods: Steam, Low-temperature steam, Regeneration, Combination and Convection (up to 300°C).

Preheating option.

Overnight cooking or low-temperature programme.

3 Speeds - 2 power ranges.

Cold-Down chamber cooling system.

"Auto-reverse" system to reverse fan rotation.

Electronic temperature probe.

Steam generator equipped with limescale detector.

Steam generator automatically empties every 24 hours of cooking.

Semi-automatic limescale removal system.

Error detection system.

"Repair service" mode system.

IPX-5 protection.

Retractable shower.

Built-in trolley and structure for trays.

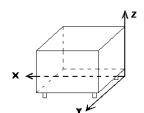
Power: 36.6 kW.

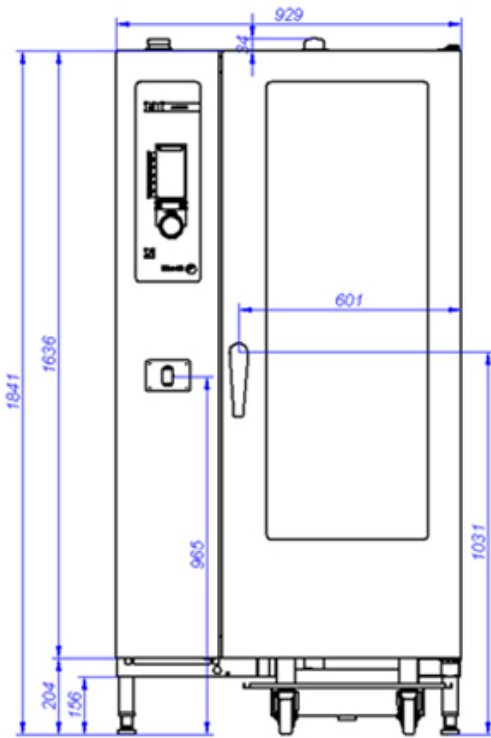
Dimensions: 929 x 964 x 1,841 mm.

Accessories in option:

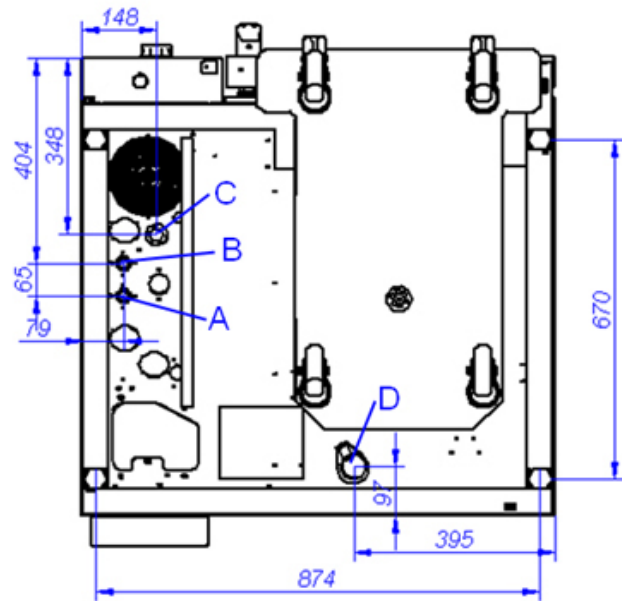
- Loading trolley for dishes CEP-201
- Thermal cover LT-201
- GN trays, grids, moulds...

<u>Connections points</u>	<u>X</u>	<u>Y</u>	<u>Z</u>	<u>Diameter</u>	<u>Information</u>
ELECTRICITY	781	615	110		
COLD WATER	850	494	110	3/4"	
DRAIN	395	157	110	30x25	
SOFT COLD WATER	850	559	110	3/4"	

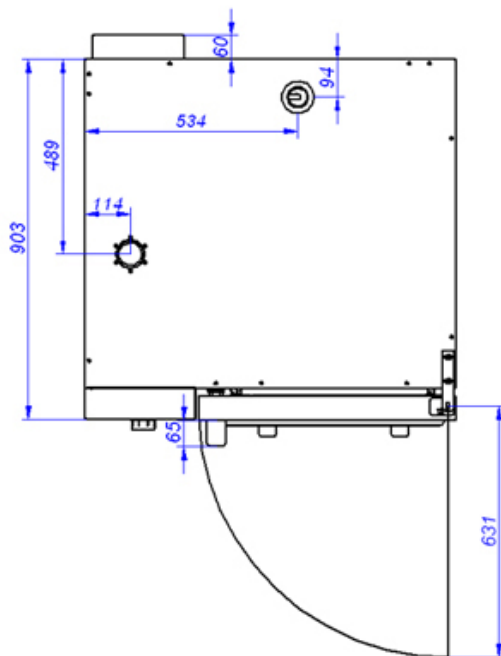




AE-201



VISTA DE LA BASE DESDE LA PARTE INFERIOR
VIEW FROM THE BOTTOM OF THE MACHINE



- A: Entrada de agua blanda
- B: Entrada de agua dura
- D: Desagüe

C: Alimentación eléctrica

- A: Soft water inlet
- B: Water inlet
- D: Drain

C: Electrical connection