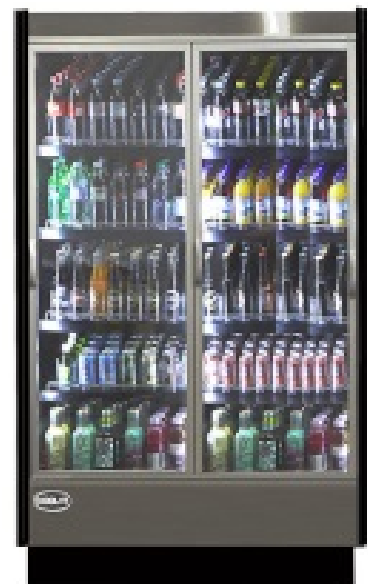




( 2 ), ( 3 ), ( 4 ), ( 5 ), ( 6 ) DOORS

**GRAB-N-GO CASES**

*MEDIUM TEMPERATURE  
HIGH VOLUME WITH FRONT DOORS  
FRONT LOADING*



**MODELS**

*KGV - FD - ( 2, 3, 4, 5, 6 ) - R*



**REMOTE  
404A REF - FORCED AIR REFRIGERATION**



Tel.: 514.737.9701 / Toll Free: 888.275.4538  
Fax: 514.342.3854 / Toll Free: 877.453.8832  
sales@mvpgroupcorp.com www.mvpgroupcorp.com

Abco Enterprises

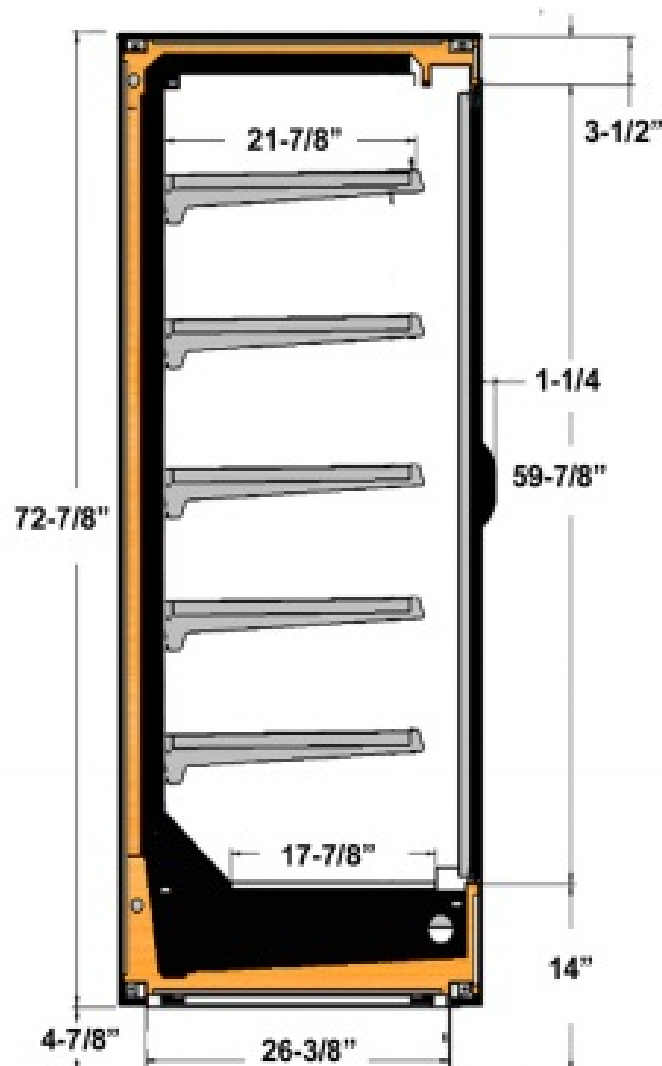
# HIGH VOLUME GRAB-N-GO



# FRONT DOORS FRONT LOAD

REMOTE	MODEL	NO. OF DOORS	O.A LENGTH INCHES	CASE TEMP	115 VOLTS TOTAL AMPS	B.T.U.	WEIGHT
	KGV-FD-2-R	2-23-1/2"	51-1/2"	39/41 F	2.2	908	520
	KGV-FD-3-R	3-23-1/2"	75-3/8"	39/41 F	2.8	1362	790
	KGV-FD-4-R	4-23-1/2"	99-3/8"	39/41 F	4.4	1816	980
	KGV-FD-5-R	5-23-1/2"	123-1/8"	39/41 F	5.0	2370	1130
	KGV-FD-6-R	6-23-1/2"	147"	39/41 F	5.6	2724	1210

THESE CASES ARE DESIGNED TO OPERATE USING R404A REFRIGERANT  
 B.T.U.'S CALCULATED AT +10° F EVAP AND 90° F AMBIENT  
 CASES ENGINEERED TO OPERATE AT 75° F AND 55% RH  
 FLOOR DRAINS REQUIRED



### STANDARD FEATURES

- INSULATION - HIGH DENSITY CFC FREE POLYURETHANE FOAM
- INTERIOR - PVC COATED STEEL-GRAY
- EXTERIOR - PVC COATED STEEL-SILVER
- ENDS-FOAMED -BLACK POLYSTYRENE
- CORD AND PLUG - ON 20 AMP OR LESS
- CASES ARE MULTIPLEXIBLE
- LED LIGHTING IN CANOPY AND UNDER ALL SHELVES
- DEFROST AND TEMPERATURE REGULATED BY A DIGITAL CONTROLLER
- ADJUSTABLE SHELVES
- ADJUSTABLE FEET
- ETL LISTED TO UL471 AND SANITATION CLASSIFIED TO NSF7

### OPTIONAL FEATURES

- OTHER COLORS AVAILABLE
- STAINLESS STEEL EXTERIOR
- STAINLESS STEEL INTERIOR
- ADDITIONAL SHELVES
- PRICE TAG MOULDING

### WARRANTY

ONE YEAR PARTS AND LABOR WITH FOUR ADDITIONAL YEARS COMPRESSOR (PARTS ONLY)